

# TRBOnet License Server

## User Guide

Version 5.2

**World HQ**  
Neocom Software  
8th Line 29, Vasilyevsky Island  
St. Petersburg, 199004, Russia

**US Office**  
Neocom Software  
15200 Jog Road, Suite 202  
Delray Beach, FL 33446, USA

**Internet**  
Email: [info@trbonet.com](mailto:info@trbonet.com)  
[WWW.TRBONET.COM](http://WWW.TRBONET.COM)

**Telephone**  
EMEA: +44 203 608 0598  
Americas: +1 872 222 8726  
APAC: +61 28 6078325

## Notices

This document is for informational purposes only. Neocom Software offers no warranties, express or implied, in this document.

Neocom and the Neocom logo, TRBOnet and the TRBOnet logo are either registered trademarks or trademarks of Neocom Software, Ltd.

MOTOROLA, MOTO, MOTOROLA SOLUTIONS and the Stylized M logo are trademarks or registered trademarks of Motorola Trademark Holdings, LLC.

Intellectual property rights protect the voice coding technology embodied in this product including patent rights, copyrights and trade secrets of Digital Voice Systems, Inc. This voice coding technology is licensed solely for use within this communications equipment. U.S. Pat. Nos. 6,199,037, 5,870,405, 5,754,974, 5,664,051, 5,630,011, 5,517,511, 5,491,772, 5,247,579, 5,226,108, 5,226,084, 5,216,747 and 5,081,681.

Microsoft, Windows, SQL Server and the .NET logo are either registered trademarks or trademarks of Microsoft Corporation in the United States and/or other jurisdictions.

Other product or company names mentioned herein may be trademarks of their respective owners.

© 2017 by Neocom Software, Ltd. All rights reserved.

This document was last revised on November 27, 2017.

## Contents

1	Introduction.....	1
1.1	About This Guide.....	1
1.2	About TRBOnet.....	1
1.3	Contacts .....	1
2	Overview .....	2
2.1	License Types .....	2
2.2	Backward Compatibility.....	2
2.3	License Management.....	3
3	Configuration .....	4
3.1	Selecting a License.....	4
3.2	Creating a Windows Service.....	6
3.3	Adding Instances to the License .....	6
3.4	Launching Named Instances .....	9

# 1 Introduction

## 1.1 About This Guide

This document is intended for administrators installing and setting up TRBOnet Enterprise/PLUS software products. The document describes the aspects of licensing multiple TRBOnet Server instances and TRBOnet Agents running on one computer.

## 1.2 About TRBOnet

TRBOnet is a suite of professional applications for MOTOTRBO digital two-way radio networks. TRBOnet manages voice and data communication paths across network endpoints. It provides a unified graphical dispatcher workbench interface for the entire range of workforce fleet management tasks.

## 1.3 Contacts

Region	Phone	Email & Support
EMEA	+44 203 608 0598	<a href="mailto:info@trbonet.com">info@trbonet.com</a> — general and commercial inquiries
Americas	+1 872 222 8726	<a href="mailto:support@trbonet.com">support@trbonet.com</a> — technical support
APAC	+61 28 607 8325	<a href="http://kb.trbonet.com">http://kb.trbonet.com</a> — online knowledge base

## 2 Overview

TRBOnet License Server is a software application intended for license management. TRBOnet License Server implements the new approach to TRBOnet software licensing, giving you means to use a single license for multiple TRBOnet Server and TRBOnet Agent instances running on one computer.

### 2.1 License Types

License files generated for TRBOnet Enterprise/PLUS 5.2 and later versions include the type of license as a new attribute.

Table 1: Types of licenses generated for TRBOnet Enterprise/PLUS 5.2 and later versions

License Type	Description	Requirements
Default	Can license one instance of TRBOnet Server or TRBOnet Agent.	A TRBOnet application is launched by default, without the instance name.
Named Instance	Can license one named instance of TRBOnet Server or TRBOnet Agent.	The license is added to the folder where the executable file of the TRBOnet application is located.  TRBOnet software is launched with the instance name.  The instance name used at launch matches the instance name specified in the license file.
License Server	Can license multiple named instances of TRBOnet Server and TRBOnet Agent running on one computer.	TRBOnet License Server is up and running on a computer.  The license is registered in TRBOnet License Server.  Named instances are added to the license.  TRBOnet applications are launched as named instances.

### 2.2 Backward Compatibility

Licenses generated for TRBOnet Enterprise/PLUS 5.2 and later versions can work with the earlier versions of TRBOnet as well. License types Default and Named Instance work similarly in all software versions. Multi-instance licenses work as Default ones.

Licenses generated for earlier versions of TRBOnet software can work in TRBOnet Enterprise/PLUS 5.2 and later versions as Default licenses.

## 2.3 License Management

To use a single license for multiple TRBOnet software instances, you need TRBOnet License Server. This software module is installed silently with TRBOnet Server or TRBOnet Agent 5.2 and later versions.

TRBOnet License Server runs as a Windows service. It knows the location of the license file and keeps the list of named TRBOnet Server and TRBOnet Agent instances that can share this license.

When TRBOnet Server or TRBOnet Agent is launched as a named instance, it tries to find TRBOnet License Service running on the computer in order to get a license.

- If the service is found, the instance receives a virtual license of type Named Instance and begins to work.
- If the service is not found, the instance looks for a license file of type Named Instance in the folder where the executive file of the launched application is located. If this file is not found either, the instance cannot be started.

Named instances of TRBOnet software running on a computer request TRBOnet License Service every six hours to learn about the license changes.

- If the service is not found, the instance broadcasts a warning message to all administrators and operators.
- After that, the instance keeps running for 24 more hours and then stops.

### 3 Configuration

This section describes how to configure TRBOnet License Server for licensing multiple instances of TRBOnet software.

Table 2: High-level steps for configuring TRBOnet License Server

#	Step	Note
1	Select a license for TRBOnet License Server.	Finds the details in <a href="#">Selecting a License</a> .
2	Configure TRBOnet License Server.	Finds the details in <a href="#">Creating a Windows Service</a> .
3	Add named instances of TRBOnet software to the license. Specify features and resources required for each instance.	Find the details in <a href="#">Adding Instances to the License</a> .
4	Try to launch a named instance added to the license.	Find the details in <a href="#">Launching Named Instances</a> .

#### 3.1 Selecting a License

TRBOnet License Server works with one license of the License Server type at a time.

**To select a license for TRBOnet License Server:**

1. Click the **Start** button or navigate to the Start Screen. Select **Neocom Software** and then **TRBOnet License Server**.

Note: TRBOnet License Server is installed without a desktop shortcut. If needed, create this shortcut manually.

If you selected a license of a different type before, the **License Manager** wizard opens.

2. In the **License Manager** wizard, navigate to the next page and select a license for TRBOnet License Server.

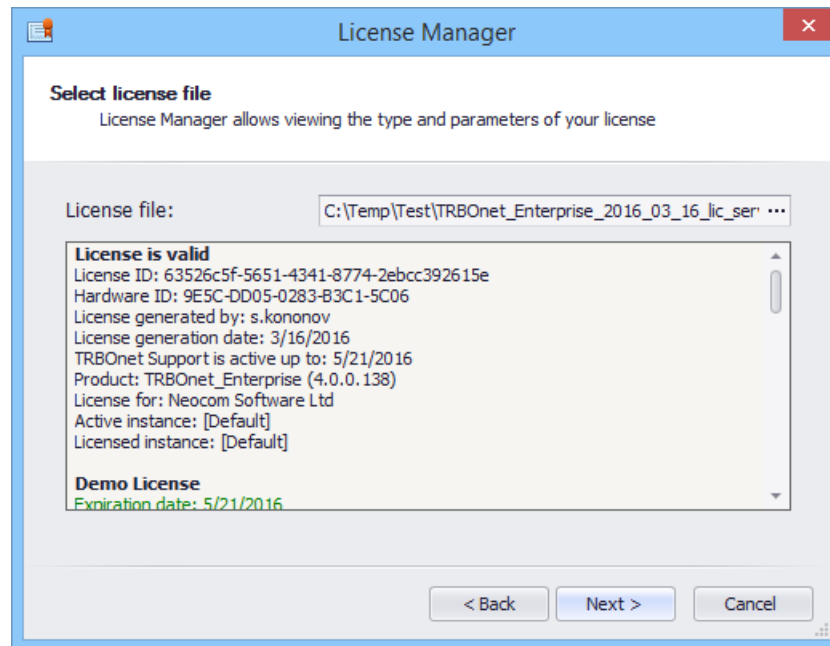


Figure 1: Selecting a license file

Note: A license type not supported by TRBOnet License Server cannot be selected. If you select a non-supported license, the **License Manager** wizard displays an error message and disables the **Next** button.

3. Click **Next** and **Finish**. The **License Server Configurator** window opens.

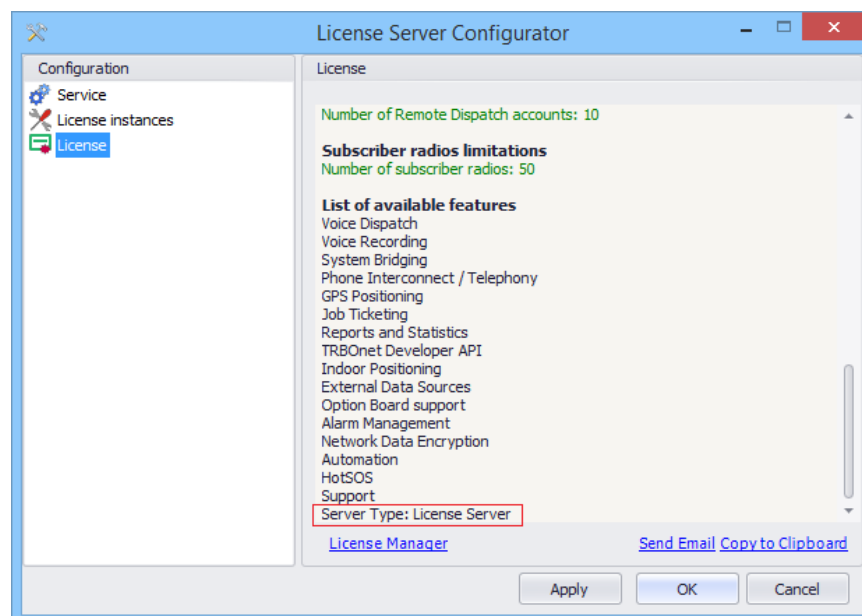


Figure 2: License Server configuration window

Now that you have selected a license for TRBOnet License Server, the next attempt to launch TRBOnet License Server opens the **License Server Configurator** window.



## 3.2 Creating a Windows Service

### To run TRBOnet License Server as a Windows service:

1. Launch TRBOnet License Server.
2. In the **License Server Configurator** window, select **Service** in the **Configuration** pane.
3. In the right pane, select the type of login:

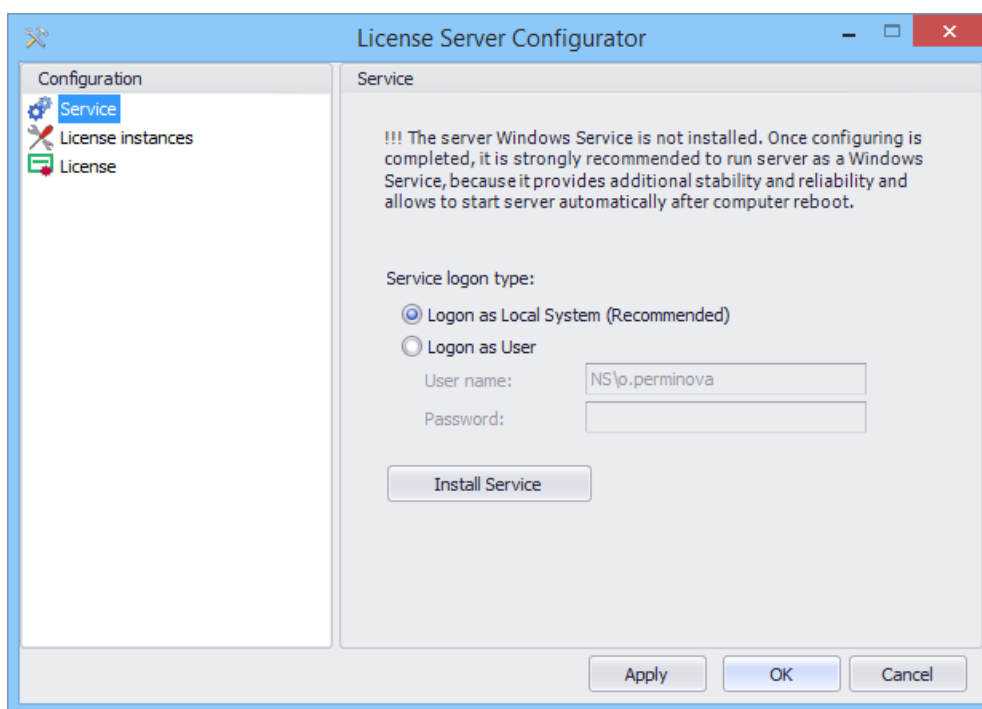


Figure 3: Installing a Windows service

- **Logon as Local System (Recommended):** Select this option to run the service under the Local System account.
  - **Logon as User:** Select this option to run the service under your Windows user account. Specify the user name and password that you use to log in to Windows.
4. Click **Install Service**. The Windows service (TRBOnet.License.Service) is installed on your computer and stopped.
  5. Click **Start service**.

## 3.3 Adding Instances to the License

TRBOnet License Server allows you to add named instances to the license and specify the licensed features and resources for each instance.

Resources available for instances are limited by the main license. For example, the license allows 10 remote dispatch accounts and 50 radios. The desired configuration includes two TRBOnet Server instances named "Customer1" and "Customer2" and a TRBOnet Agent instance named "Agent1" running on one host.

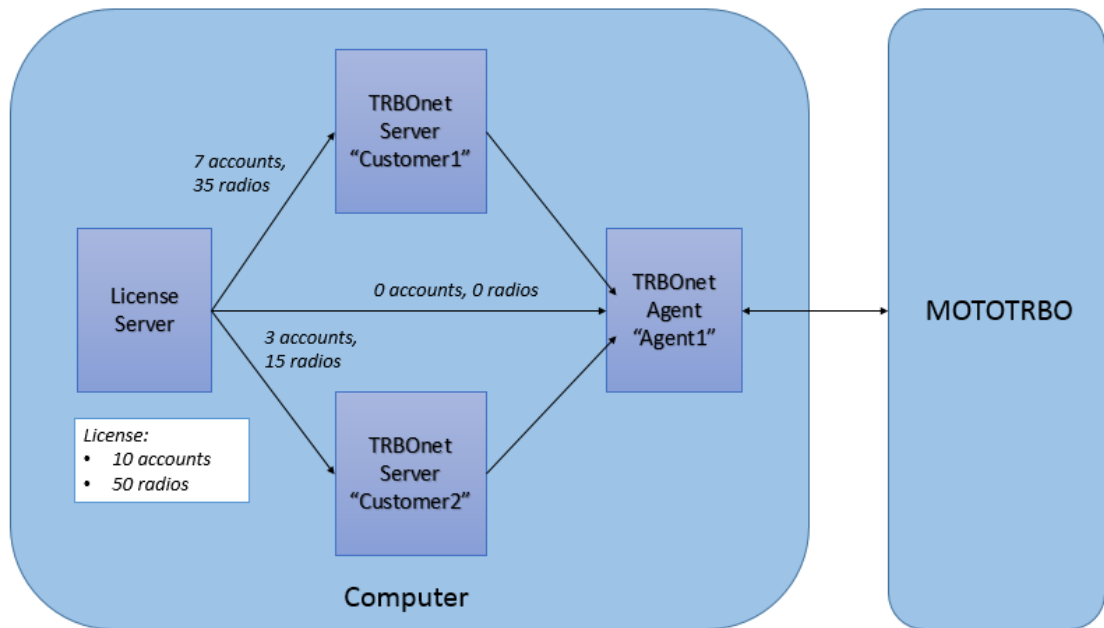


Figure 4: Sharing resources of a license

If you give seven remote dispatch accounts and 35 radios to one TRBOnet Server, the other TRBOnet Server can get the remaining remote dispatch accounts and radios. TRBOnet Agent does not require any of these resources and should be configured to get "zero" values.

**To add an instance to the license:**

1. Launch TRBOnet License Server.
2. Click **License Instances** in the **Configuration** pane.
3. Click **Add** in the right pane. The new instance appears in the left pane under **License instances**.
4. In the right pane, enter the instance name to the **Name** field, for example, "Customer1".

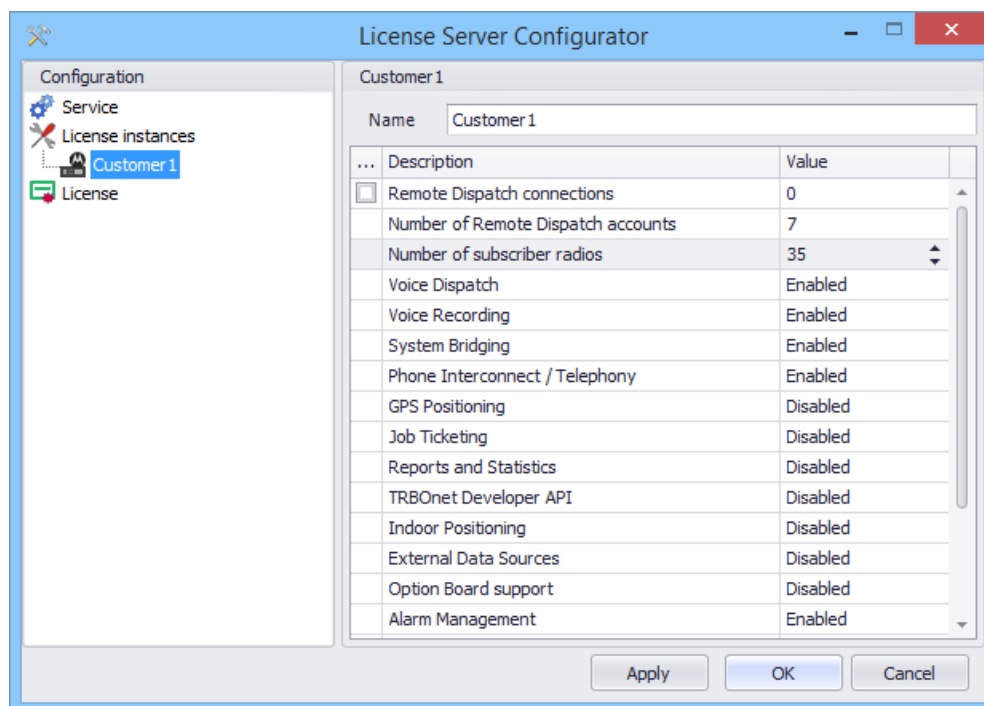


Figure 5: Adding a software instance

5. In the grid, allocate part of resources to the instance. The grid shows all assets provided by the license. Disable features where their use shall be restricted. Modify the numeric values as follows:
  - **Remote Dispatch connections:** For TRBOnet Server, leave the option not selected to copy the license settings; check the item and specify the number of allowed connections otherwise.
  - For TRBOnet Agent, leave the option not selected, or select the option and specify "0".
  - **Number of Remote Dispatch accounts:** For TRBOnet Server, allocate the number of remote dispatch accounts not used by other instances. For TRBOnet Agent, specify "0".
  - **Number of subscriber radios:** For TRBOnet Server, specify the number of subscriber radios not used by other instances. For TRBOnet Agent, specify "0".
6. Select **License instances** in the navigation page. In the right pane, instances that can request a license from TRBOnet License Server must be flagged. If you remove a flag from a named instance, you exclude it from the license.

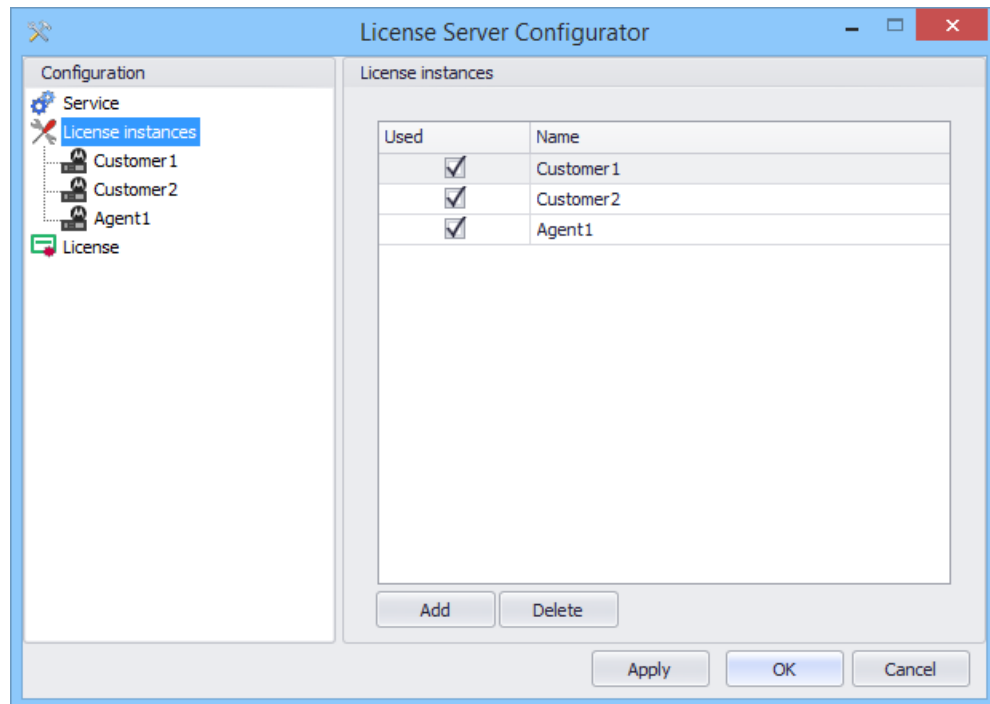


Figure 6: Instances included in the license (flagged)

7. Click **Apply**.

If you have exceeded the limits of the license, the **License Server Configurator** window shows the respective field marked with the error icon. Correct the values and apply the changes again.

Note: When TRBOnet License Server calculates the use of resources, non-flagged instances are not considered.

### 3.4 Launching Named Instances

To get a license from TRBOnet License Server, a TRBOnet application shall be launched with the instance name in the command line interface. For example, TRBOnet Server "Customer1" can be launched with the following command:

```
"C:\Program Files (x86)\Neocom Software\TRBOnet Enterprise\Server\TRBOnet.Enterprise.Server.exe" Customer1
```

Note: For your convenience, we recommend that you add a desktop shortcut for each named instance of TRBOnet software and modify the object path accordingly.

The TRBOnet Server configuration window displays the instance name in the yellow band. To open the virtual license conditions, select **License** in the navigation pane.

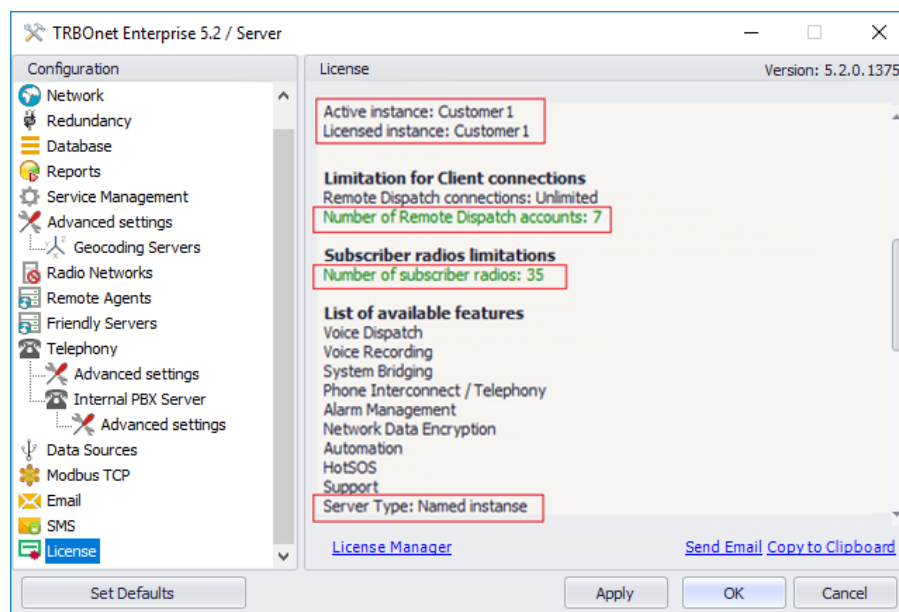


Figure 7: The virtual license conditions

- In the right pane, the **Active instance** and **Licensed instance** attributes show the instance name.
- The allocated resources (remote dispatch accounts and radios) are configured for "Customer1" in the license in TRBOnet License Server.
- The **Server Type** attribute (at the bottom) shows the type of the virtual license as **Named Instance**.